

## Press Release

September 20, 2024

Contact:

Katharina Weinmann

BAUER Aktiengesellschaft

BAUER-Strasse 1

86529 Schrobenhausen, Germany

Phone: +49 8252 97-3947

[public.relations@bauer.de](mailto:public.relations@bauer.de)

[www.bauer.de/en](http://www.bauer.de/en)

### **Ship ahoy at the Regensburg soil treatment center 1,650 t of soil loaded in nine hours**

- Bauer Resources recently carried out the transshipment of soil material at the soil treatment center using waterways.
- The amount loaded corresponds to approximately 63 truck loads.
- Less CO<sub>2</sub> and less traffic on the road – transport by barge offers several advantages.

**Regensburg, Germany** – Clack! The steel grab of the harbor crane lowers through the open roof of the hall, grabs approx. 5 t of soil and lifts it effortlessly into the air. With a controlled swivel movement, the cargo is emptied onto the waiting ship. Then, the grab returns to its starting position. This process is repeated over and over again until the ship is fully loaded. The venue: the Regensburg soil treatment center of BAUER Resources GmbH. Recently, a ship was successfully loaded there in collaboration with Rhenus, in the middle of bayernhafen Regensburg – another step forward, with many advantages and challenges.

#### **Abracadabra, open the roof!**

A total of 1,650 t of soil from various Bavarian construction projects was transferred to a barge. What initially sounds like a complex process turned out to be surprisingly uncomplicated thanks to the sliding roof on the port basin side of the site. "This special functionality made it possible for the soil to be transferred directly onto the ship," explains Helen Wagner, Head of the soil treatment center at BAUER Resources GmbH, and adds: "Nevertheless, loading took about nine hours." And where will the soil be taken now? To a disposal facility located outside Bavaria. Due to the limited disposal capacities for certain waste categories, landfill facilities outside the federal state are used for some pollution classes.

#### **More environmental protection, less CO<sub>2</sub>**

At bayernhafen Regensburg, Bauer Resources demonstrates that sustainability is not just a buzzword, but an established practice. This is because soil transport by ship offers clear advantages over road transport: Transshipment on waterways significantly relieves roads and motorways, reduces congestion and minimizes wear and tear on traffic routes. From a climate protection perspective, the advantage is even greater: Compared to a forty-ton truck, a barge consumes about a third less energy. This significantly reduces greenhouse gas emissions and noticeably lowers air pollution.

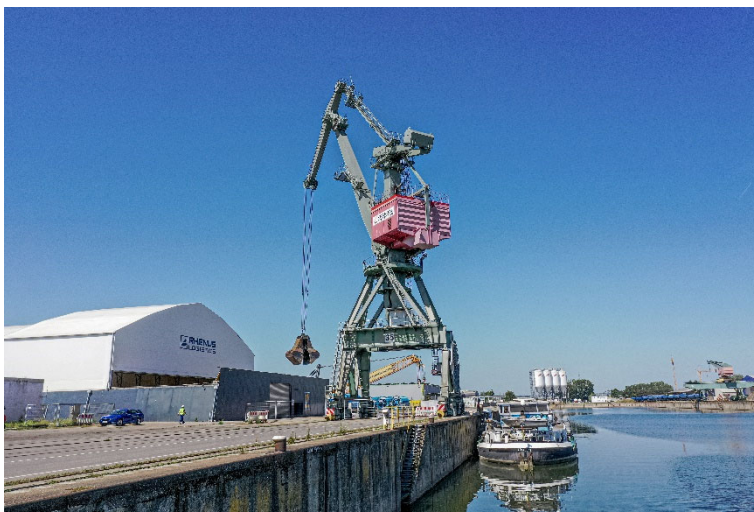
#### **The effort is worth it**

In order to be allowed to load mineral waste onto the ship, a permit is required in accordance with the Federal Immission Control Act. "Even during the design and approval

phase, we deliberately decided on a location with a port connection, as flexibility is becoming increasingly important for transport operations," emphasizes Helen Wagner. Even though ship loading entails some challenges – such as the coordination with the shipping company, the scheduling of loading and unloading times, as well as the ordering of port logistics and the deployment of additional personnel – the effort pays off.

A **video** about the project is available at [https://youtu.be/\\_xfG1GwpDi0](https://youtu.be/_xfG1GwpDi0)

**Images: pressebild-press-image-bodenreinigungszentrum-soil-treatment-center-regensburg-schiffsverladung-bauer-resources...**



(1) At the Regensburg soil treatment center, soil was loaded onto a ship by Bauer Resources.



(2) The head of the soil treatment center, Helen Wagner, had everything under control while the ship was being loaded.

All images: © BAUER Group



## About BAUER Resources Group

The regionally organized BAUER Resources GmbH is aligned to projects around the world with its subsidiaries in Germany, Africa, the Middle East and South America and has extensive expertise in the areas of drilling services and water wells, environmental services, constructed wetlands, mining and rehabilitation. With more than 30 years of experience, BAUER Resources GmbH's Bauer Umwelt business division is one of the leading specialists in site remediation, soil remediation and waste disposal, both in the domestic market and internationally. As an expert in pollution reduction, Bauer Umwelt offers a diverse range of services for all environmental issues. Other companies of the BAUER Resources Group are GWE GmbH, SCHACHTBAU NORDHAUSEN GmbH and SPESA Spezialbau und Sanierung GmbH. More at <https://resources.bauer.de/en>.

## About Bauer

The BAUER Group is a leading provider of services, equipment and products dealing with ground and groundwater. The Group can rely on a worldwide network on all continents. The Group's operations are divided into three forward-looking segments with high synergy potential: Geotechnical Solutions, Equipment and Resources. Bauer profits enormously from the collaboration of its three business segments, enabling the Group to position itself as an innovative, highly specialized provider of products and services for demanding projects in specialist foundation engineering and related markets. Bauer therefore offers suitable solutions to the world's greatest challenges, such as urbanization, the growing infrastructure needs, the environment, as well as water. The BAUER Group was founded in 1790 and is based in Schrobenhausen, Bavaria. In 2023, it employed about 12,000 people and achieved total Group revenues of EUR 1.8 billion worldwide. More information can be found at <https://www.bauer.de/en>. Follow us on [Facebook](#), [LinkedIn](#), [Instagram](#) and [YouTube!](#)